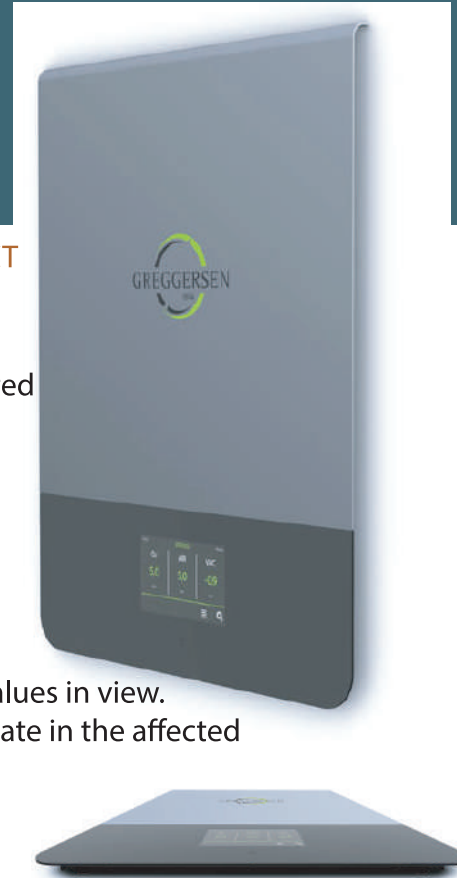


VENTUS EVO-AVSU WITH ALARM FOR THE MONITORING OF MEDICAL GASES



GREGGERSEN GERMAN PRODUCT

DESIGN

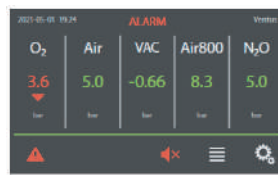
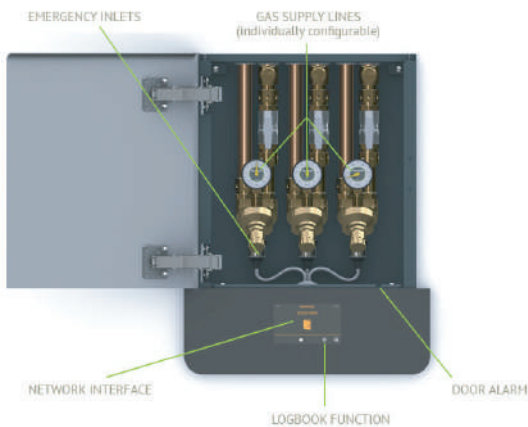
The upper panel enables quick access to the valve units of the individual supply lines. The VENTUS evo is made entirely of high-quality powder-coated metal, which makes it robust, durable and timelessly beautiful. Its slim and clean design fits perfectly into any environment, without becoming invisible.

ELECTRONICS

The area monitor, integrated in the lower panel, continuously monitors the pressure values of the medical gas supply network. The clean interface of the touchscreen enables the staff to always have the current pressure values in view. An optical and acoustic alarm shows the exact deviation from the normal state in the affected supply line.

AMBIENT-ALARM

Optionally, we also offer our Ambient-Alarm for the VENTUS evo. In addition to the display and the acoustic signal, the alarm message is also shown via an ambient light on the Ventus. This feature is especially advantageous at night, since the source of potential system failure can be located quickly and the alarm can be remedied.



ALARM



FRONT AND MOUNTING MODULE

FRONT AND MOUNTING MODULE

An alternative to the standard front is also available. To keep an eye on the pressure gauges and valve positions, the upper panel features a window and a lock with emergency release function. We also offer a surface mounting Module for our VENTUS evo.

UAE Address:

IHMS FZC, Warehouse NO.LV-46-B, Hamriyah Free Zone, UAE , Telfax: +971 6 704 4351
 Emails: info@ihmsglobal.com , sales@ihmsglobal.com website: www.ihmsglobal.com